



CELEBRATING DIVERSITY

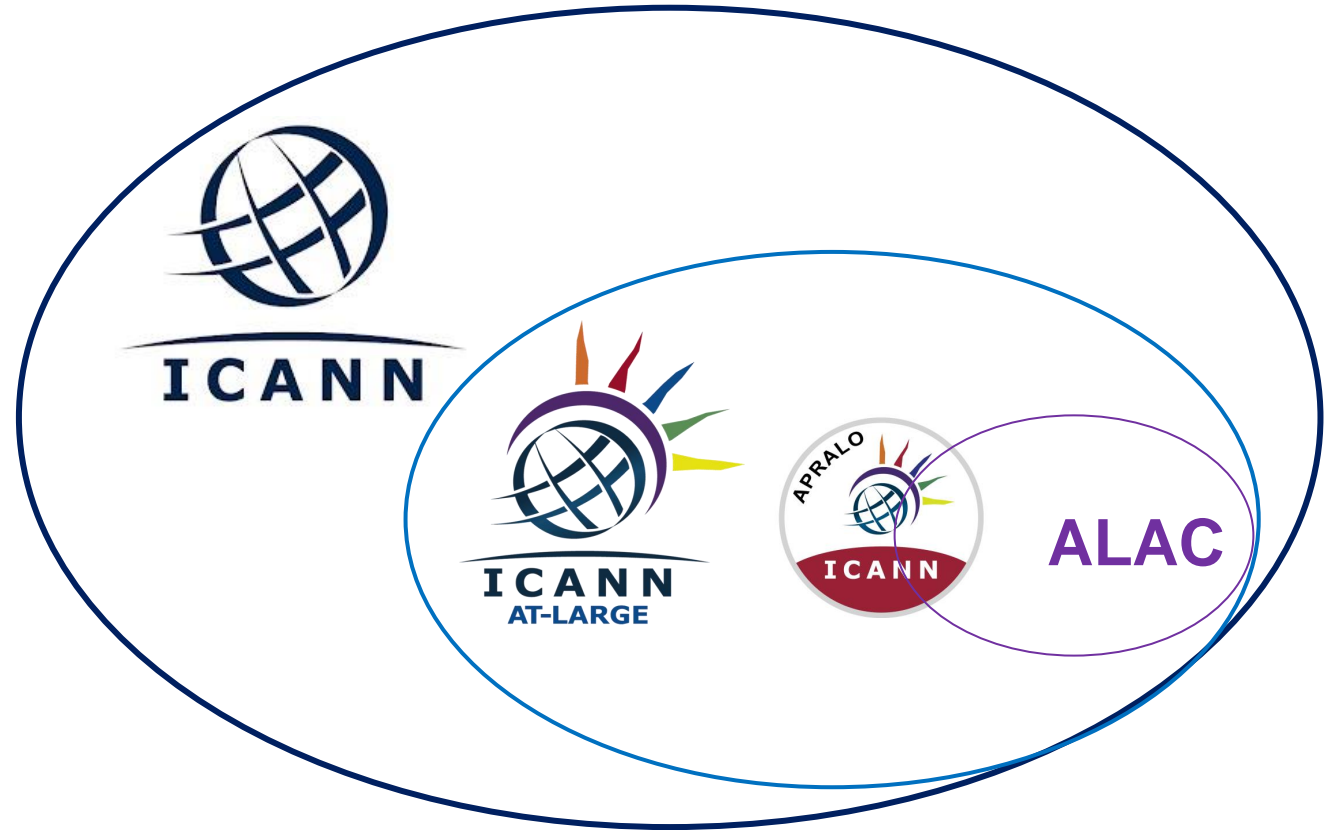
An Introduction to the At-Large Community & APRALO

AP* Meeting

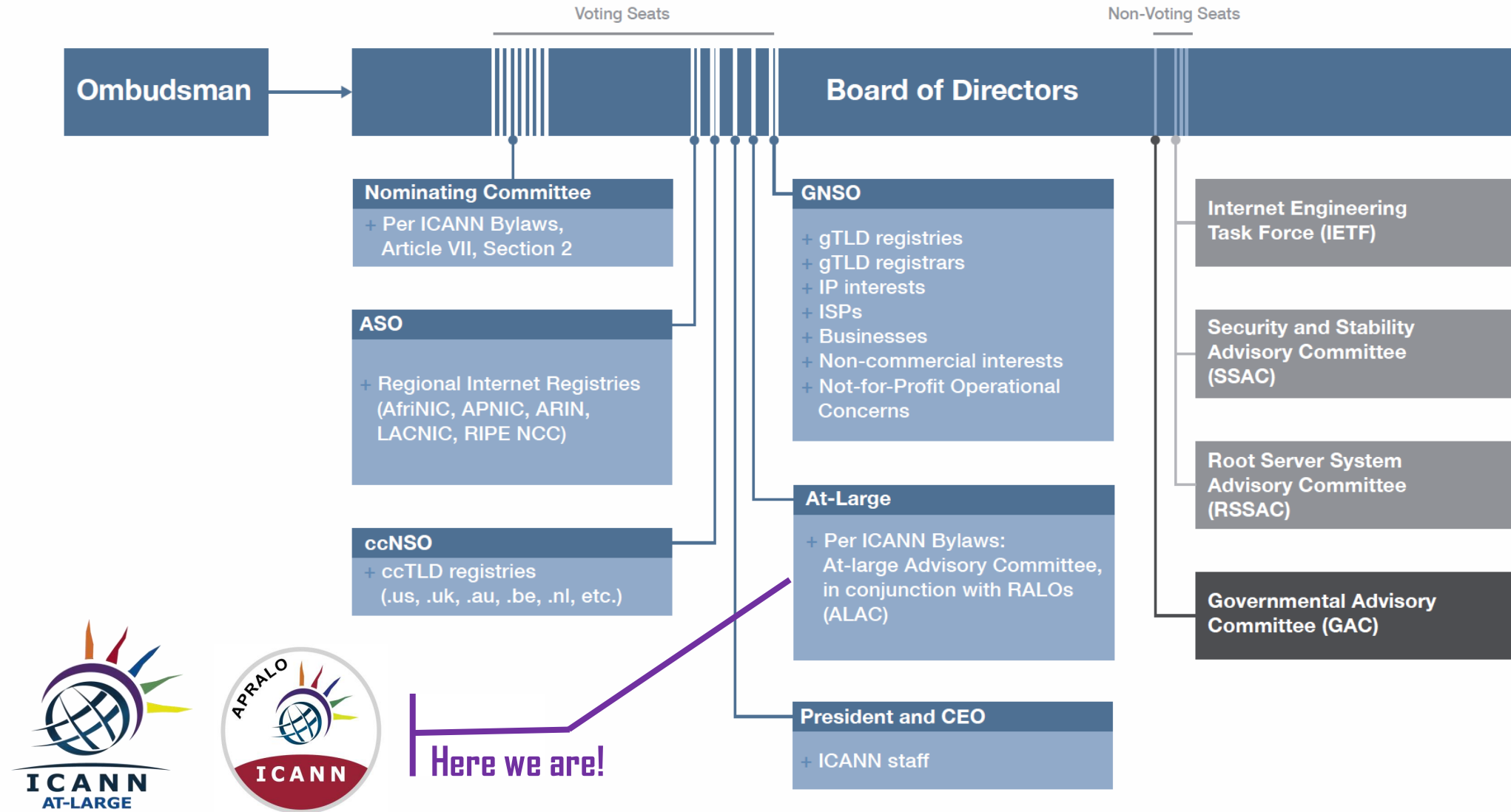
Presented by: Amrita Choudhury
APRALO Chair
September 2024

Agenda

- **At-Large Community**
 - **APRALO** - The Asian, Australasian & Pacific Islands Regional At-Large Organization
 - **ALAC** – At-Large Advisory Committee
- **What We Do, Why and How**
- **When and How to Participate**
- **Exploring Collaborations**
- **Available Resources**

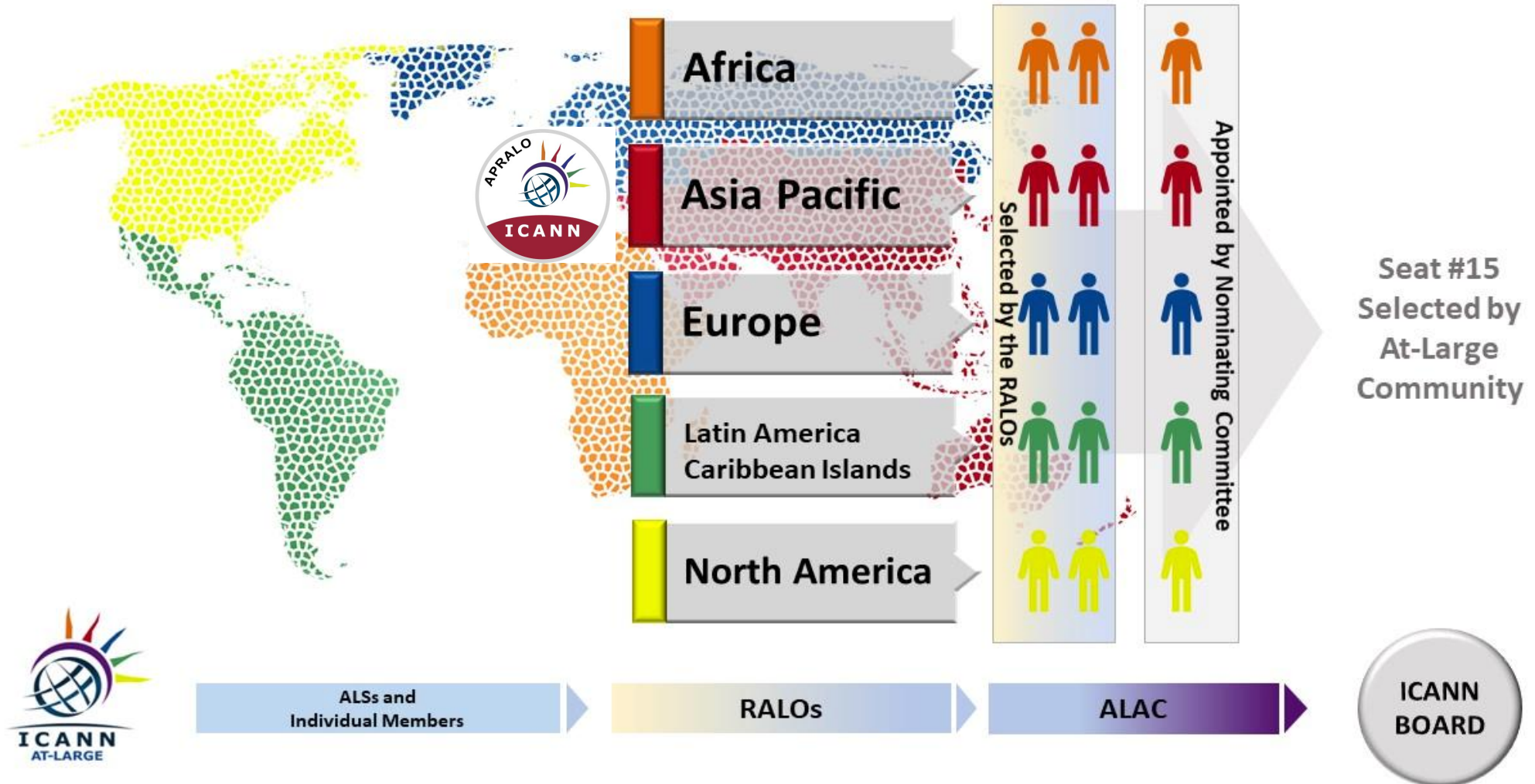


The At-Large is Part of the ICANN Community



The At-Large Community, APRALO and ALAC

The At-Large Community



APRALO - The Asian, Australasian & Pacific Islands Regional At-Large Organization



**A community comprising At-Large Structures (ALSes) and Individual Members (IMs)
as well as non-member participants**

The ALAC – At-Large Advisory Committee



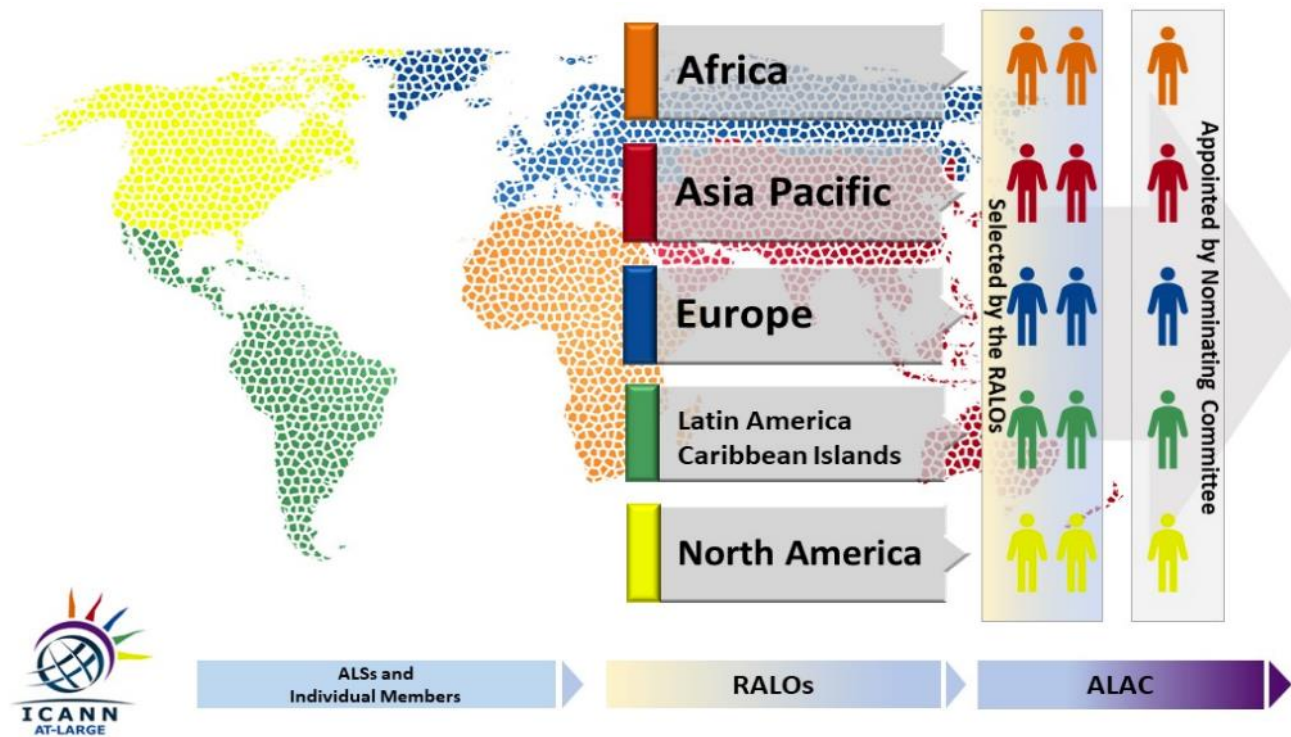
The ALAC for the 2023-2024 Term

15-person Advisory Committee

- Advocates for end-user interests
- Manages At-Large Community organization building
- Advises on ICANN activities - Internet policies developed by ICANN's Supporting Organizations
- Helps safeguard ICANN's accountability mechanisms
- Selects one ICANN director

ALAC Mandate per the ICANN Bylaws

In accordance with ICANN's Bylaw, the **ALAC** has the duty to understand, represent, and advocate for the best interest of Internet end users worldwide.



But, remember ... the ALAC is only 15 persons.

Hence, reliance on a **bottom-up, organization-building approach comprising members (ALSes and IMs) organised by Regions (RALOs)**

Internet individual end user interests

Q. Who is the Internet individual end user?

A. You, me and anyone who uses the Internet.

Q. What's the distinction?

A. The individual end user uses the Internet for personal activities – email, browsing, streaming, shopping, banking, elearning etc. etc. etc.

Q. What about domain name registrants?

A. Only where their interests do not diverge significantly.



Key At-Large Activities through ALAC



Provide Advice to
ICANN Board



Participate in Policy
Development
Processes



Conduct Capacity
Building and Outreach
Initiatives

Key At-Large Working Groups

Many At-Large working groups are dedicated to ICANN policy discussions and advice development activities.

Many others tackle various aspects of organization building, such as advancing accessibility and inclusion at ICANN, testing communication and collaboration tools, planning outreach and engagement projects, developing capacity building programs for newcomers, and fulfilling operational needs of the Community.

Almost all of our working groups, committees, small teams are open to everyone regardless of membership status in At-Large.

**At-Large
Consolidated Policy
Working Group
(CPWG)**

**At-Large
Operations, Finance
& Budget Working
Group (OFB-WG)**

**At-Large
Internationalized
Domain Name
Policy Working
Group**

**ALAC Community
Engagement Sub-
Committee
(ACES)**

Join the APRALO Community

Provide a **forum for promoting Asia Pacific Internet users' participation and involvement** in ICANN in an open, accountable and transparent manner

Promote, **understand & advocate for individual Internet users** and to provide a forum for **outreach, co-ordination and exchange of information** and knowledge

Act as an **interface** between individual Internet users and ICANN

Promote skills development and information exchange related to the Internet amongst Members

Bridge the digital divide and encourage users in developing countries to participate in APRALO

Select two individuals as APRALO Members' representatives to ALAC



APRALO Policy Forum



APRALO Monthly Calls



Outreach & Engagement



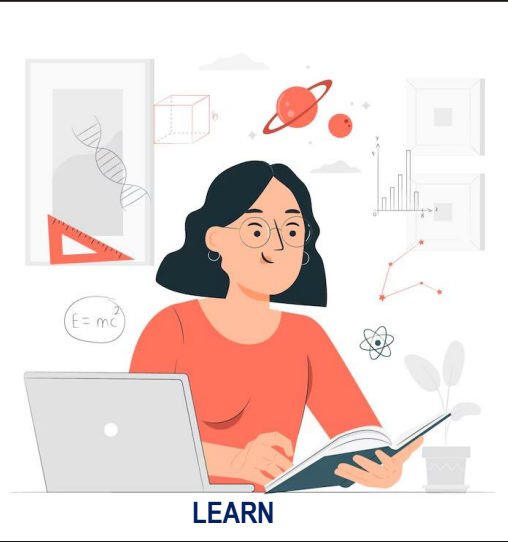
APRALO Newsletter



Continuous Improvement

Benefits of APRALO Membership/Participation

Designed by Freepik



Immerse in Policies being discussed @ICANN

Understand Issues of Importance

Offer Perspectives of different Stakeholders

Gain/offer Best Practices & Expertise

Acquire new skills

Engage in other Internet Governance and multistakeholder Communities



When and How A person Participate



It's entirely up to them

When ever they are ready to:

- See what they can offer
- Participate in APRALO initiatives
- Contribute to the work that we do
- Contribute to ICANN Policy Development
- Promote ICANN and APRALO's mandate
- Conduct Outreach & Engagement
- Share information with their community
- Relay input from their community

Support is Available

- Advice, assistance, guidance
- Discussion on issues, policy-making
- Planning outreach & engagement initiatives
- Speaker support
- Campaign formulation & support
- Mentorship



alamy

Image ID: G3F099
www.alamy.com

Image credit: Alamy

APRALO Leadership Team



Amrita Choudhury
Chair



Ali Al-Meshal
Vice-Chair



Aris Ignacio
Vice-Chair



Satish Babu
ALAC Member



Shah Rahman
ALAC Member



Justine Chew
ALAC Member

In concluding ...

We would be happy to explore

Strengthening Relationships

- Strengthening relationships through engagement in matters of mutual interest.

Collaborations

- Exploring local level collaborations between AP* members and APRALO members in the region

Questions?

Links to Key APRALO Resources

Operations & Governance

[APRALO Page](#)

[APRALO Rules of Procedure \(RoP\) 2024](#)

[At-Large Structures \(ALSes\)](#)
- ALS Wiki

[Individual Members \(IMs\)](#)

[How to Join](#)

[APRALO Monthly Calls](#)

[APRALO Newsletter Archive](#)

[APRALO Continuous Improvement](#)
– [Cycle 1 Plan presentation](#)

Outreach & Engagement

[FY25 O&E Plan](#)

[APRALO Register of Skills & Interests \(RoSI\)](#)
- [Pilot Cycle 1](#) (19 Jul -13 Sep 2024)

APAC-Discuss Mailing List:
apac-discuss@icann.org

[Join APRALO Community WhatsApp Group](#)

Policy

[APRALO Policy Forum \(APF\)](#)

[APF 2024 Activities](#)

[APF 2024 Planning Calendar](#)

[APF Members List](#)

APF Mailing List – contact
staff@atlarge.icann.org to join

Links to Key At-Large Resources

Operations & Governance

[At Large Page](#)

[ALAC Page](#)

[ALAC Rules of Procedure](#)

[ALAC Monthly Calls](#)

[At-Large Operational, Finance & Budget Working Group \(OFB-WG\) Page](#)

[At-Large Continuous Improvement](#)

Outreach & Engagement

[ALAC Community Engagement Sub-Committee \(ACES\)](#)

[At-Large Social Media Working Group](#)

[At-Large Technology Task Force \(TTF\)](#)

[ICANN Learn](#)

Recommended entry courses:

- 1- [Course 154.1 At-Large: Welcome to Our World](#)
- 2- [Course 500.1 Policy Development Fundamentals](#)
- 3- [Course 506.1 ICANN Policy Development: A guide for At-Large Participants](#)

Policy

[At-Large Consolidated Policy Working Group Page](#)

[At-Large Internationalized Domain Name Working Group Page](#)

[ALAC Policy Comments & Advice](#)

Statement of Interests (SOI) – contact staff@atlarge.icann.org to create / how to update